


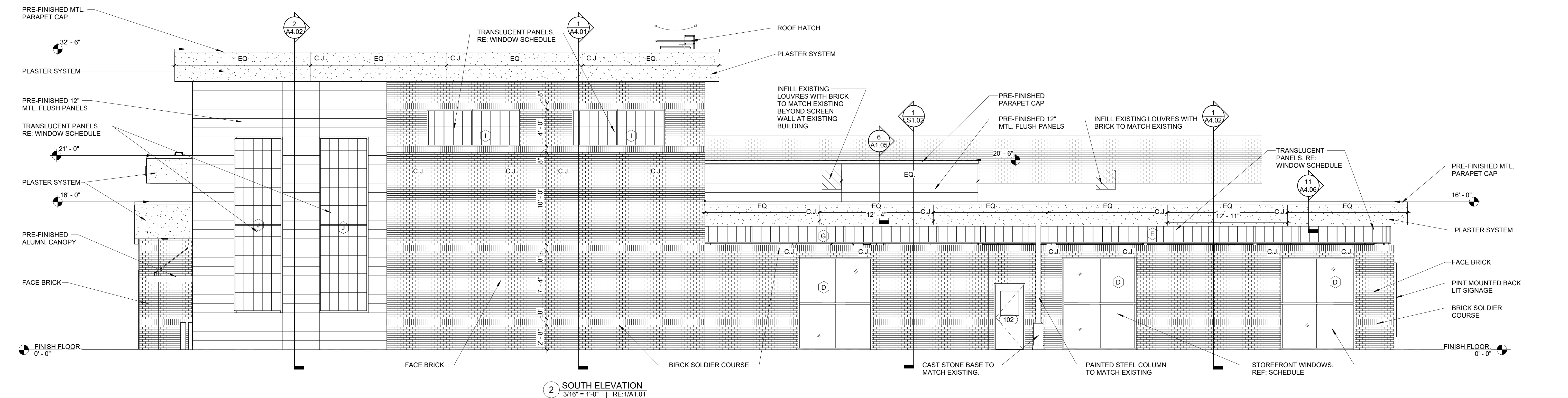
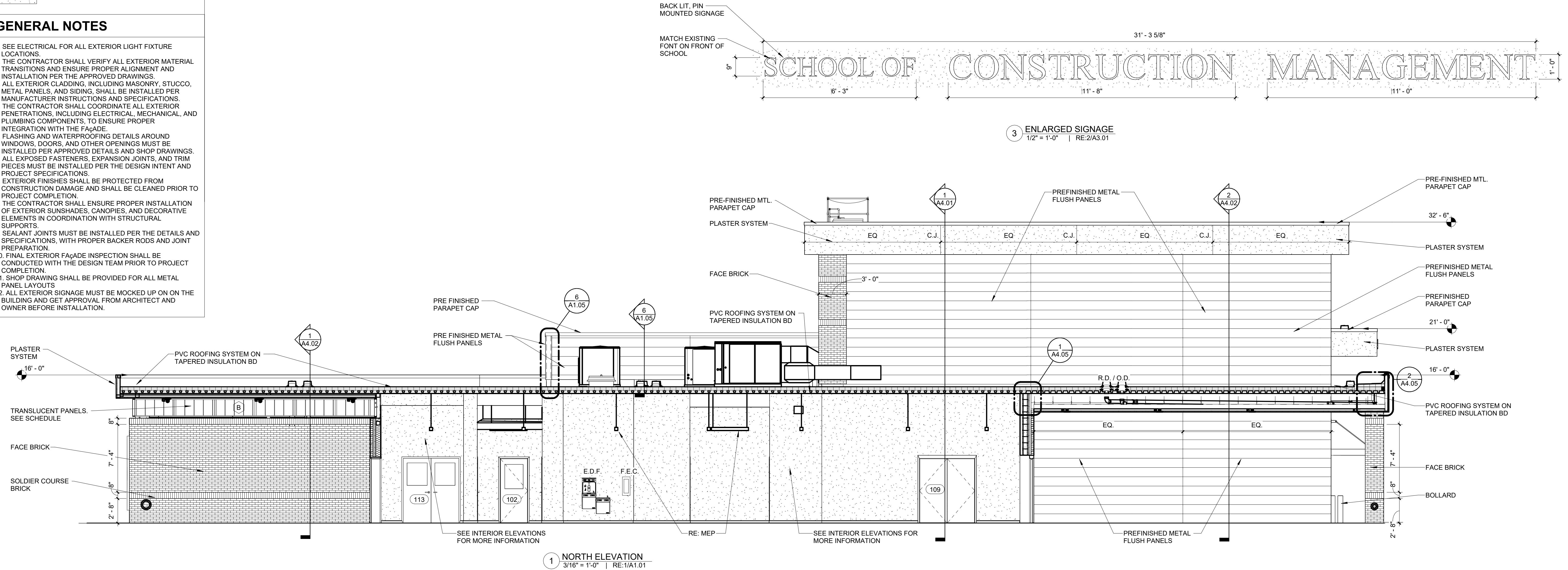


LEGEND

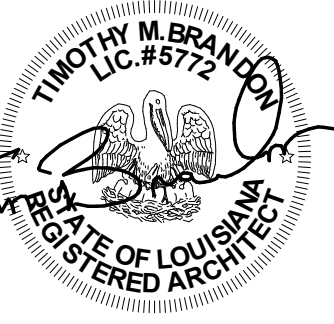
	PRE-FINISHED 12\" FLUSH PANELS		FACE BRICK. MATCH EXISTING
	PLASTER SYSTEM		

- # GENERAL NOTES
1. SEE ELECTRICAL FOR ALL EXTERIOR LIGHT FIXTURE LOCATIONS.
 2. THE CONTRACTOR SHALL VERIFY ALL EXTERIOR MATERIAL TRANSITIONS AND ENSURE PROPER ALIGNMENT AND INSTALLATION PER THE APPROVED DRAWINGS.
 3. ALL EXTERIOR CLADDING, INCLUDING MASONRY, STUCCO, METAL PANELS, AND SIDING SHALL BE INSTALLED PER MANUFACTURER INSTRUCTIONS AND SPECIFICATIONS.
 4. THE CONTRACTOR SHALL COORDINATE ALL EXTERIOR PENETRATIONS, INCLUDING ELECTRICAL, MECHANICAL, AND PLUMBING COMPONENTS, TO ENSURE PROPER INTEGRATION WITH THE FACADE.
 5. FLASHING AND WATERPROOFING DETAILS AROUND WINDOWS, DOORS, AND OTHER OPENINGS MUST BE INSTALLED PER APPROVED DETAILS AND SHOP DRAWINGS.
 6. ALL EXPOSED FASTENERS, EXPANSION JOINTS, AND TRIM MUST BE PROTECTED AND FINISHED PER THE DESIGN INTENT AND PROJECT SPECIFICATIONS.
 7. EXTERIOR FINISHES SHALL BE PROTECTED FROM CONSTRUCTION DAMAGE AND SHALL BE CLEANED PRIOR TO PROJECT COMPLETION.
 8. THE CONTRACTOR SHALL ENSURE PROPER INSTALLATION OF EXTERIOR SUNSHADES, CANOPIES, AND DECORATIVE ELEMENTS IN COORDINATION WITH STRUCTURAL SUPPORTS.
 9. SEALANT JOINTS MUST BE INSTALLED PER THE DETAILS AND SPECIFICATIONS, WITH PROPER BACKER RODS AND JOINT PREPARATION.
 10. FINAL EXTERIOR FACADE INSTALLATION SHALL BE CONDUCTED WITH THE DESIGN TEAM PRIOR TO PROJECT COMPLETION.
 11. SHOP DRAWINGS SHALL BE PROVIDED FOR ALL METAL PANEL LAYOUTS.
 12. ALL EXTERIOR SIGNAGE MUST BE MOCKED UP ON ON THE BUILDING AND GET APPROVAL FROM ARCHITECT AND OWNER BEFORE INSTALLATION.



TBA STUDIO
ARCHITECTURE
103 Cypress Street
West Monroe, LA 71291
Tel. 318.340.1550
Fax. 318.998.1315
www.tbastudio.com

mp



SCHOOL OF CONSTRUCTION PRACTICE
LAB BUILDING, UNIVERSITY OF
LOUISIANA MONROE

507 Filhiol Ave, Monroe, LA 71203

DRAWING REVISIONS

[illegible]

KB MU

HECKED CW

SHEET

A3.02

NOV 2025

Project No.: 24-0059

Name: _____

DESCRIPTION:

DESCRIPTION:

EXTERIOR
ELEVATIONS